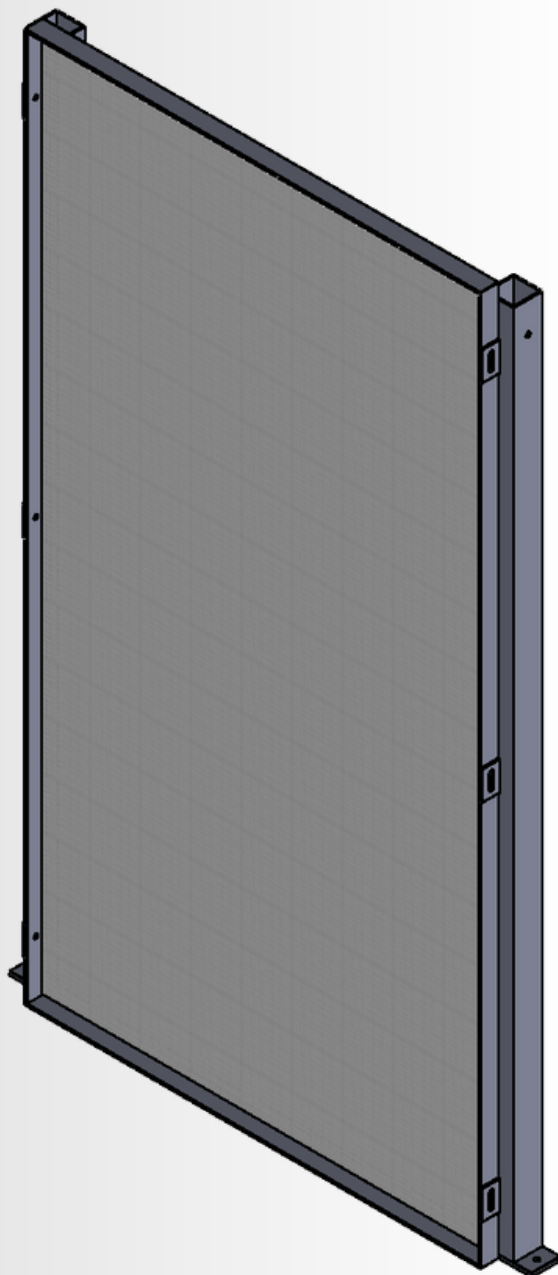
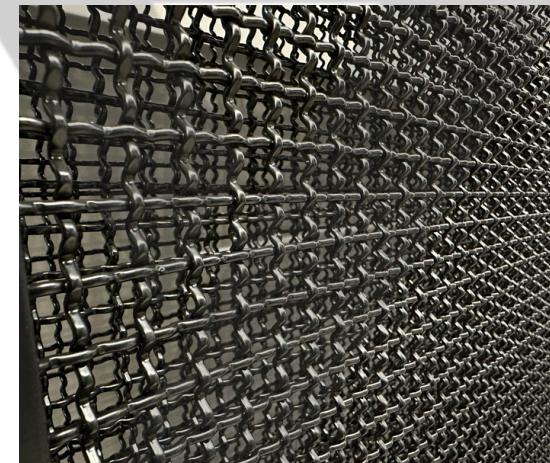


Mesh Panel - Back view:

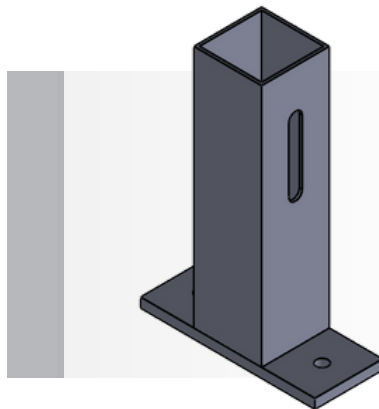


Mesh frame panels

- ✓ Used in data centers
- ✓ Protects against data theft from the server
- ✓ High quality finish
- ✓ Matching modern interior design
- ✓ Product tailored to individual customer requirements
- ✓ Flow and transparency through the mesh panel
- ✓ Zinc plated and powder coated secure system



Mesh Panel - Post:




SAFETY NET DATA CENTER

Let Us do it for You!

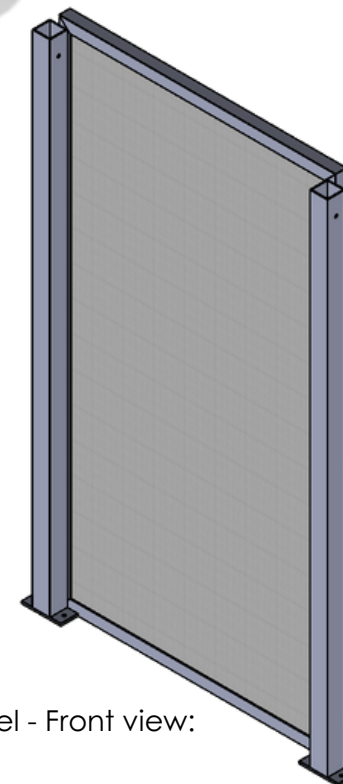
For more information visit our website or contact us

 info@venttrade.eu

 www.venttrade.eu

 Abrahama 1A/2.01
80-307 Gdańsk
Poland

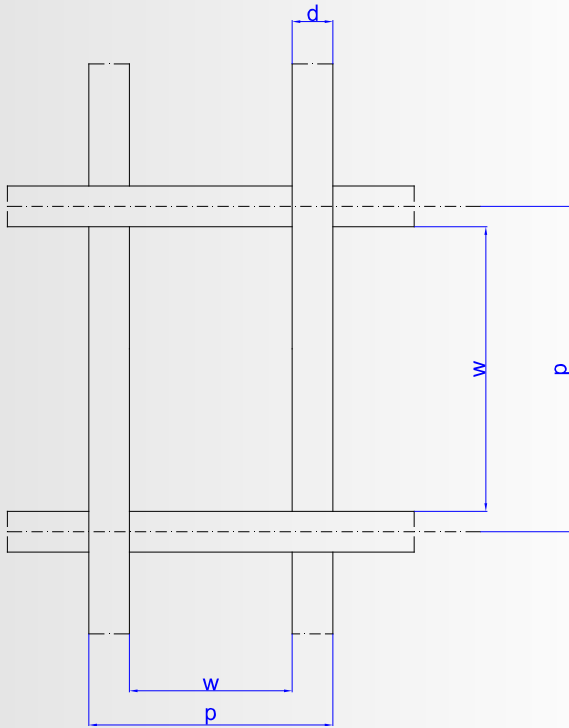
Mesh Panel - Front view:



Wire mesh

- ✓ Mesh opening width 13x13 [mm]
- ✓ Thickness (wire diameter): 3 [mm]
Material: Galvanized steel
- ✓ Plate dimensions: 2400 x 1200 [mm]
- ✓ Type of aperture: Square aperture

Illustrative drawing:



w - Aperture width
d - Wire diameter
p - Pitch

Applications:

- ✓ Screening and filtering
- ✓ Widely used in:
 - mine
 - oil
 - chemical industry
 - food industry
 - pharmaceutical industry
 - machine-making

Let Us do it for You!

For more information visit our website or contact us

✉ info@venttrade.eu

🌐 www.venttrade.eu

🏠 Abrahama 1A/2.01
80-307 Gdańsk
Poland

